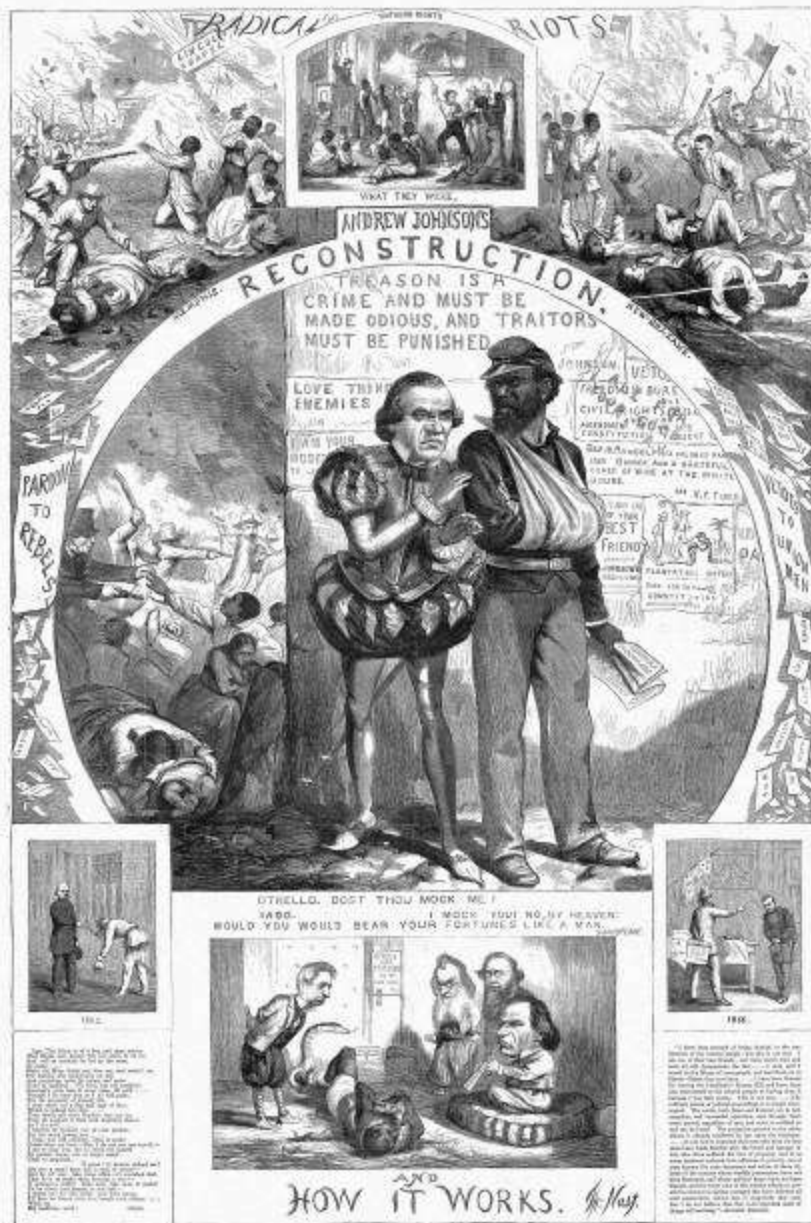


# Presidential Reconstruction II



Sean Adams  
University of Florida  
October 2010  
spadams@ufl.edu



1862.

1862. The cartoon depicts the early stages of Reconstruction, where white supremacists and their allies in the South are shown oppressing and mistreating African Americans. The white man in the top hat represents the political establishment, while the black man being beaten represents the oppressed population.



1863.

1863. This scene illustrates the continuation of racial violence and the struggle for civil rights. The white man's actions are a direct result of the political and social tensions of the time, reflecting the deep-seated prejudice and resistance to change in the South.



AND HOW IT WORKS. G. H. Hart

# The 14<sup>th</sup> Amendment

- Restates principles of citizenship outlined in Civil Rights Act of 1866
- Reduces representation for states that disqualify voters
- Disqualifies former Confederates (can be repealed by 2/3 vote by Congress)
- Repudiates Confederate war debt

Printed according to Act of Congress, in the Year 1866, by Harper & Brothers in the Clerk's Office of the District Court for the Southern District of New York.

**RIOTS.**

his, on the  
statement  
one of the  
disturbance  
degrees of  
creditable to  
the riotous  
and were a  
For the riot  
business were  
the soldiers  
the Colored  
d difficulty.  
potation has  
an unshared  
of frequent  
to southern  
been guilty  
dy conduct.  
some drunk-  
ent were on  
silly, when  
my wife or  
n to cross

Wards en-  
a, throwing  
revolvers,  
followed it  
the police  
and mostly  
at prejudice  
shamefully  
ink riots of  
content this

self-quarter,  
purchased to  
stand on the  
called child-  
and brought  
some armed  
soldiers, so  
the riot up  
in order to



**BURNING FREEMEN'S SCHOOL MEMPHIS, TENN. RIOT MAY 1866**

RIOT IN MEMPHIS, TENNESSEE, DURING THE RIOT—BURNING A FREEDMEN'S SCHOOL-HOUSE.

[ENGRAVED BY A. B. W.]

position  
policy, not  
don't, we  
stanzas  
By war  
parties in  
Cuba and  
Massachusetts  
Pennsylvania  
the women  
lives which  
By dispo-  
tion.

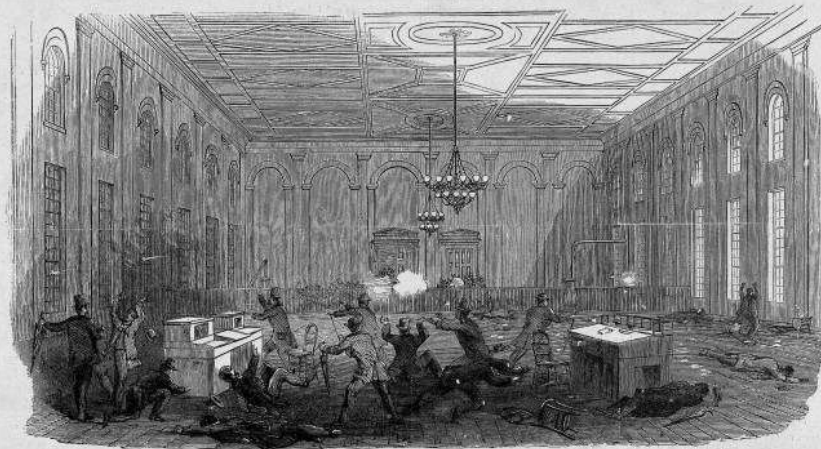
Trusting  
most, we  
throughout  
case of a  
a different  
want pro-  
work an  
preventing  
the party  
from after  
when the  
around all  
the fight  
my light  
light up  
efficiency  
In front  
was really  
and had  
all parts  
to work  
business  
chick with  
walking  
been. It  
special to  
could do  
what for  
to work  
children  
mean an  
right in a  
the way  
the best  
entirely  
to for an  
a while  
during the  
After a  
begin to  
prevention  
to the  
was not  
to the



THE RIOT IN NEW ORLEANS—MURDERING NEGROES IN THE REAR OF MECHANICS' INSTITUTE.  
[SKETCHED BY THEODORE R. DAVIS.]



THE RIOT IN NEW ORLEANS—PLATFORM IN MECHANICS' INSTITUTE AFTER THE RIOT.  
[SKETCHED BY THEODORE R. DAVIS.]



THE RIOT IN NEW ORLEANS—INTERIOR OF MECHANICS' INSTITUTE DURING THE RIOT.—[SKETCHED BY THEODORE R. DAVIS.]



THE RIOT IN NEW ORLEANS—CARRYING OFF THE DEAD AND WOUNDED—INHUMAN CONDUCT OF THE POLICE.

# New Orleans Riot

July 1866

THE RADICALS FOR MR. GEARY

# RADICAL CONVENTION

In Philadelphia, September 3d, 1866.

**GEARY** The CANDIDATE for GOVERNOR  
**WAS IN THE PROCESSION**

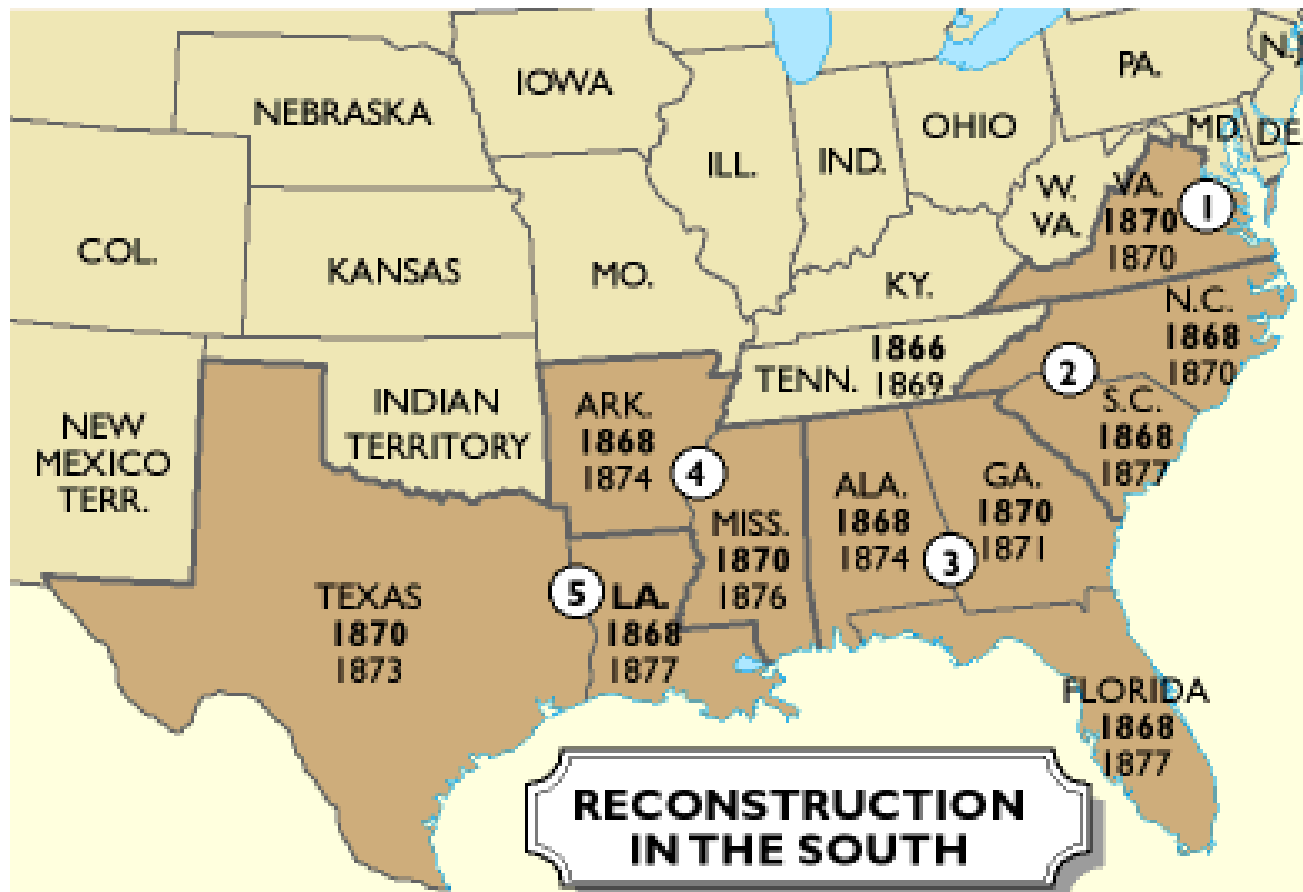


**EVERY RADICAL CANDIDATE**

For UNITED STATES SENATOR took part.

# White Men & Women

ARE YOU READY FOR THIS?



**1866** Date of readmission to the Union

**1869** Date of reestablishment of conservative or Democratic control

Commanding generals of military districts:

- ① Gen. Schofield    ② Gen. Sickles    ③ Gen. Pope  
 ④ Gen. Ord    ⑤ Gen. Sheridan



Edwin Stanton, Secretary of War





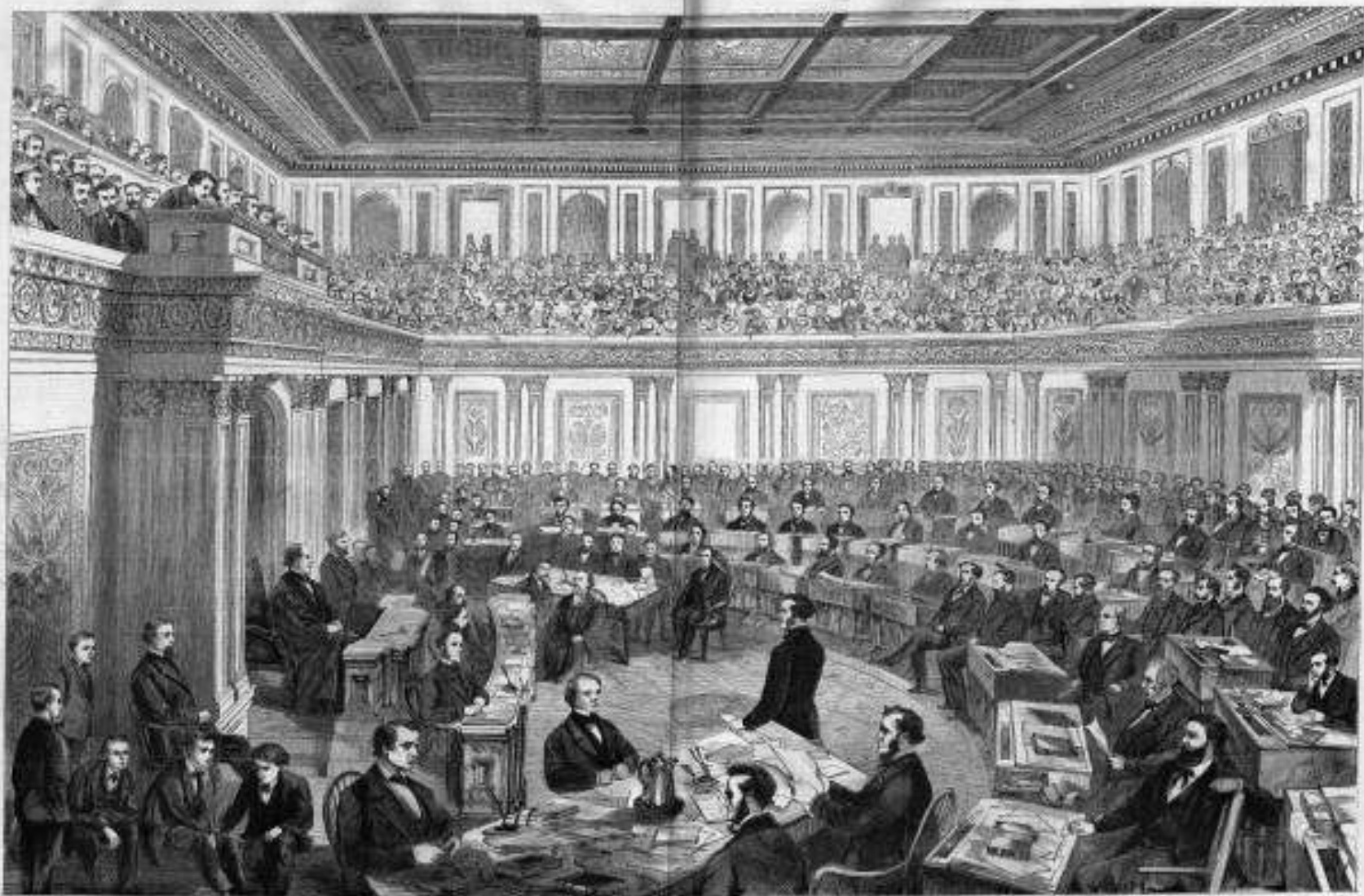
THIS LITTLE BOY WOULD PERSIST IN HANDLING BOOKS ABOVE HIS CAPACITY.



AND THIS WAS THE DISASTROUS RESULT.



FAC-SIMILE OF TICKET OF ADMISSION TO THE IMPEACHMENT TRIAL.



THE BENCH AS A COURT OF DEMOCRACY FOR THE TRIAL OF JEREMY BENTHAM—(Scene at Thomas S. Green's in New York.)



PREPARING TO GO OUT.  
CHARITY COVERS A MULTITUDE OF SINS.  
A. J. "I HAVE SEEN A WORSE REIGN THAN THIS."